



Report of Test

LLIA001574-007A-R01*

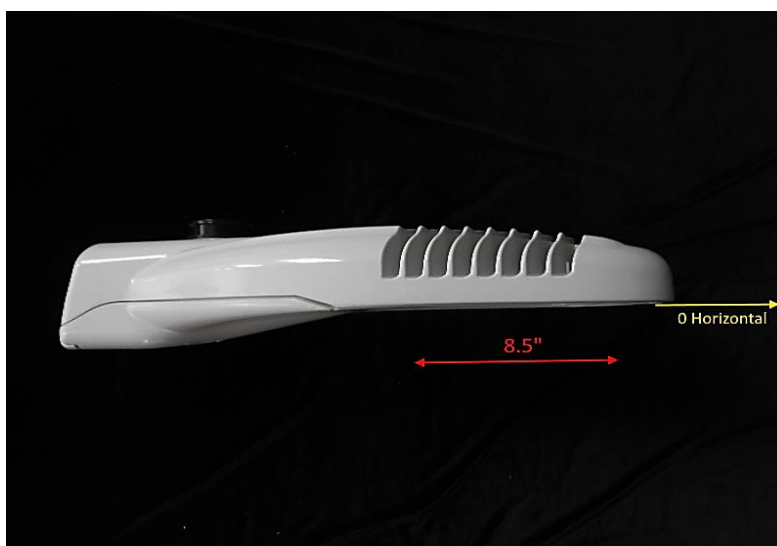
Roadway/Area Light Distribution Photometry Test Report

Catalog Number: NXT-36S-5-X-2ES-6-XX-4-XX-X-XX-X

Pole/arm mounted, grey painted cast aluminum housing and door/driver compartment cover, one circuit board, one clear plastic lens with optic below each LED and clear flat glass enclosure.

36 white LEDs

Osram Optotronic OT100W/UNV/800C/2DIM/P6 LED driver labeled as 600mA, WH91-5U1-03 surge suppressor



Prepared For:
LED Roadway Lighting
84 Chain Lake Drive
Suite 403

Halifax, Nova Scotia B3S 1A2, Canada

Performance Summary			
Input Voltage	120.0 V	Luminous Flux	8194.5 Lumens
Input Current	0.5858 A	Total Efficacy	117.8 Lm/W
Input Power	69.55 W		
Frequency	60.00 Hz	Roadway Throw	Medium
Power Factor	0.990	Roadway Type	Type II
Current THD	2.2 %	IES BUG Rating	B2 - U0 - G2

*This test report supersedes test report LLIA001574-007A

This test report was issued by LightLab International Allentown, LLC without alterations or erasures.

Test date: 11/04/2021

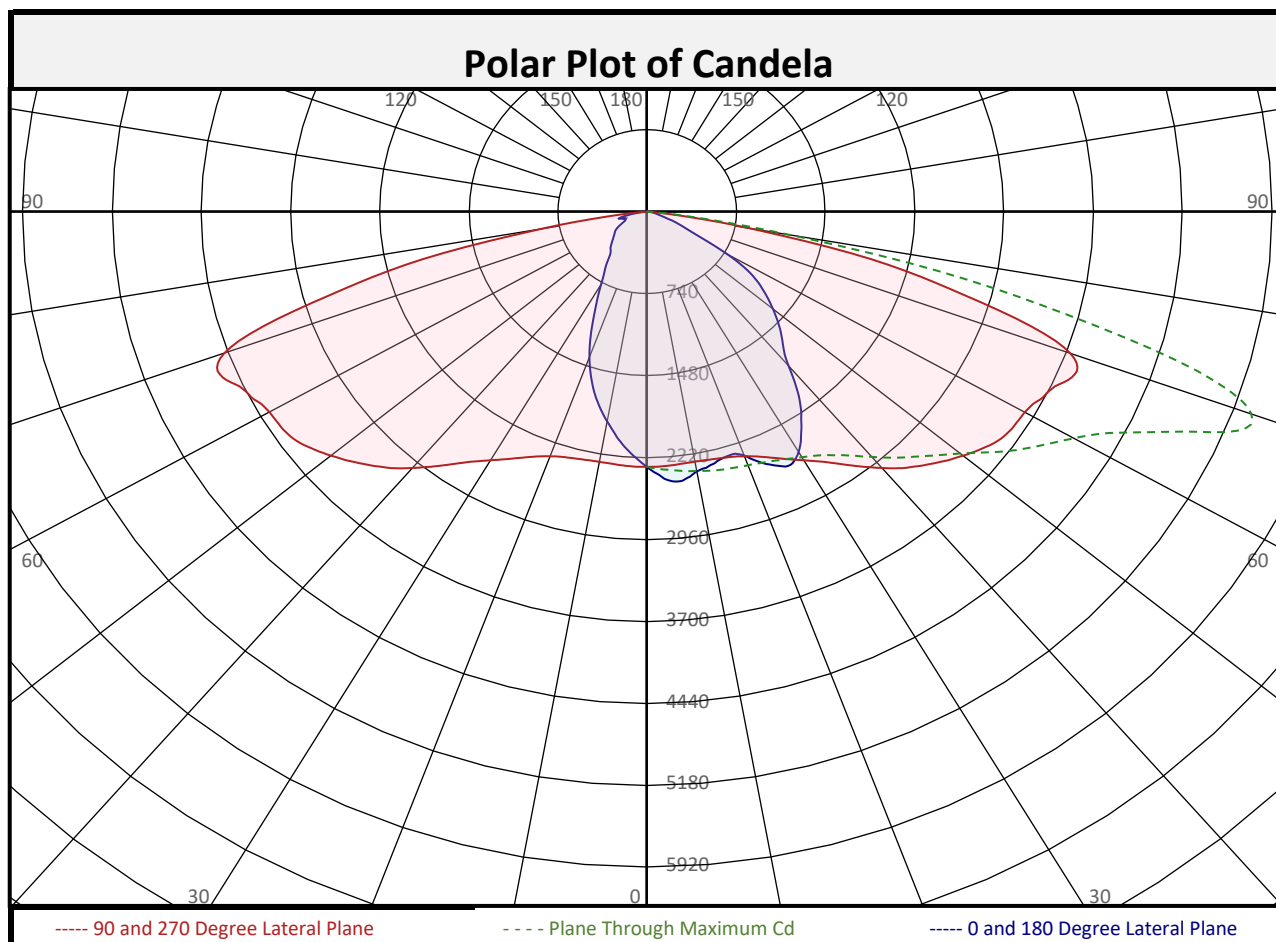
Report date: 11/11/2021

Signed: _____



Report of Test

LLIA001574-007A-R01

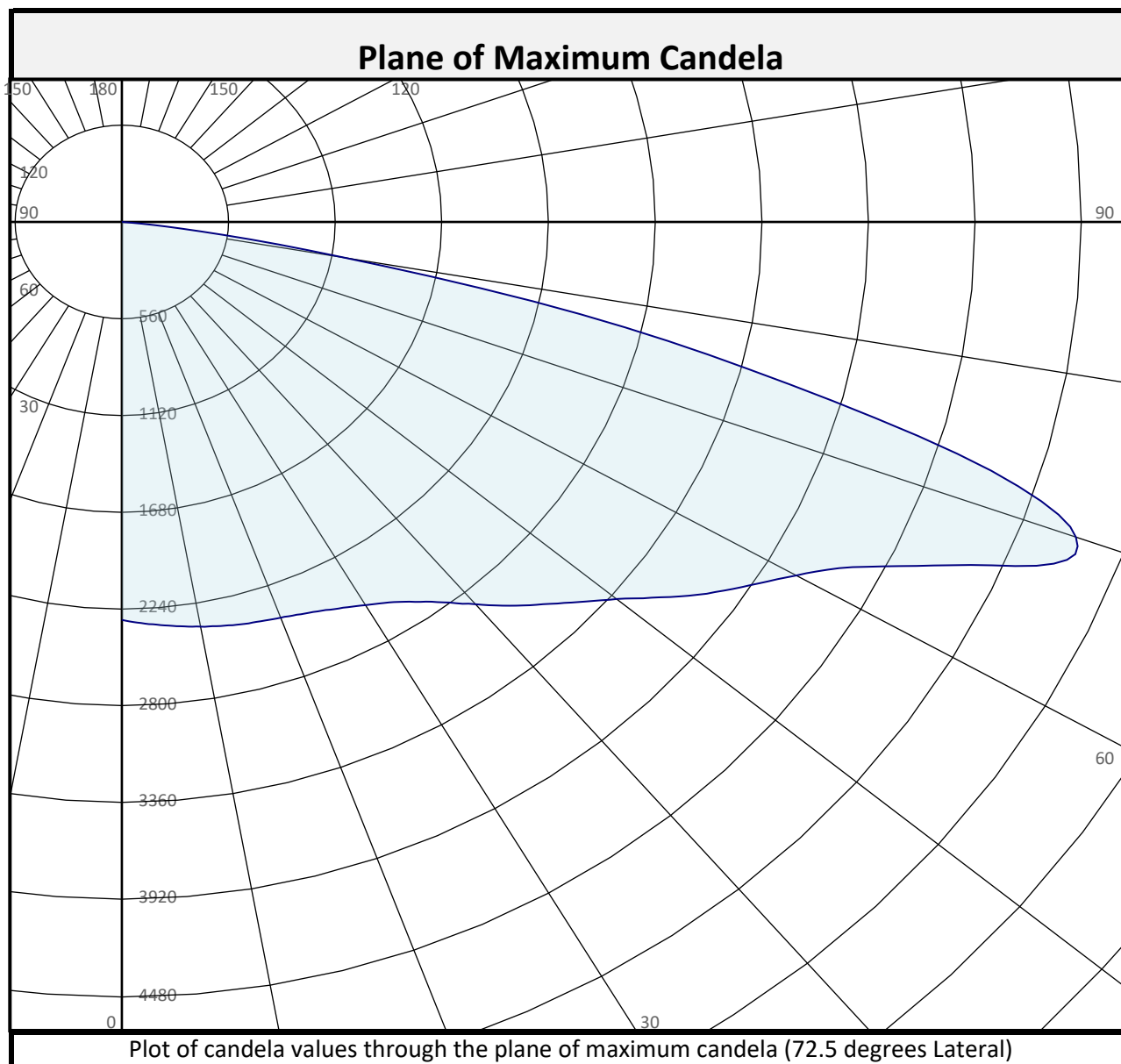


Zonal Flux Summary										
Zone (Deg Vert)	Flux (Lumens)	Percent of Total		Zone (Deg Vert)	Flux (Lumens)	Percent of Total		Zone (Deg Vert)	Flux (Lumens)	Percent of Total
0-10	216.7	2.6%		90-100	0.0	0.0%		0-20	821.6	10.0%
10-20	604.9	7.4%		100-110	0.0	0.0%		0-30	1761	21.5%
20-30	939.1	11.5%		110-120	0.0	0.0%		0-40	2980	36.4%
30-40	1219	14.9%		120-130	0.0	0.0%		0-60	5926	72.3%
40-50	1415	17.3%		130-140	0.0	0.0%		0-80	8137	99.3%
50-60	1531	18.7%		140-150	0.0	0.0%		10-90	7978	97.4%
60-70	1440	17.6%		150-160	0.0	0.0%		20-50	3574	43.6%
70-80	771.7	9.4%		160-170	0.0	0.0%		40-90	5214	63.6%
80-90	57.1	0.7%		170-180	0.0	0.0%		60-90	2268	27.7%
0-90	8194	100.0%		90-180	0.0	0.0%		0-180	8194	100.0%



Report of Test

LLIA001574-007A-R01

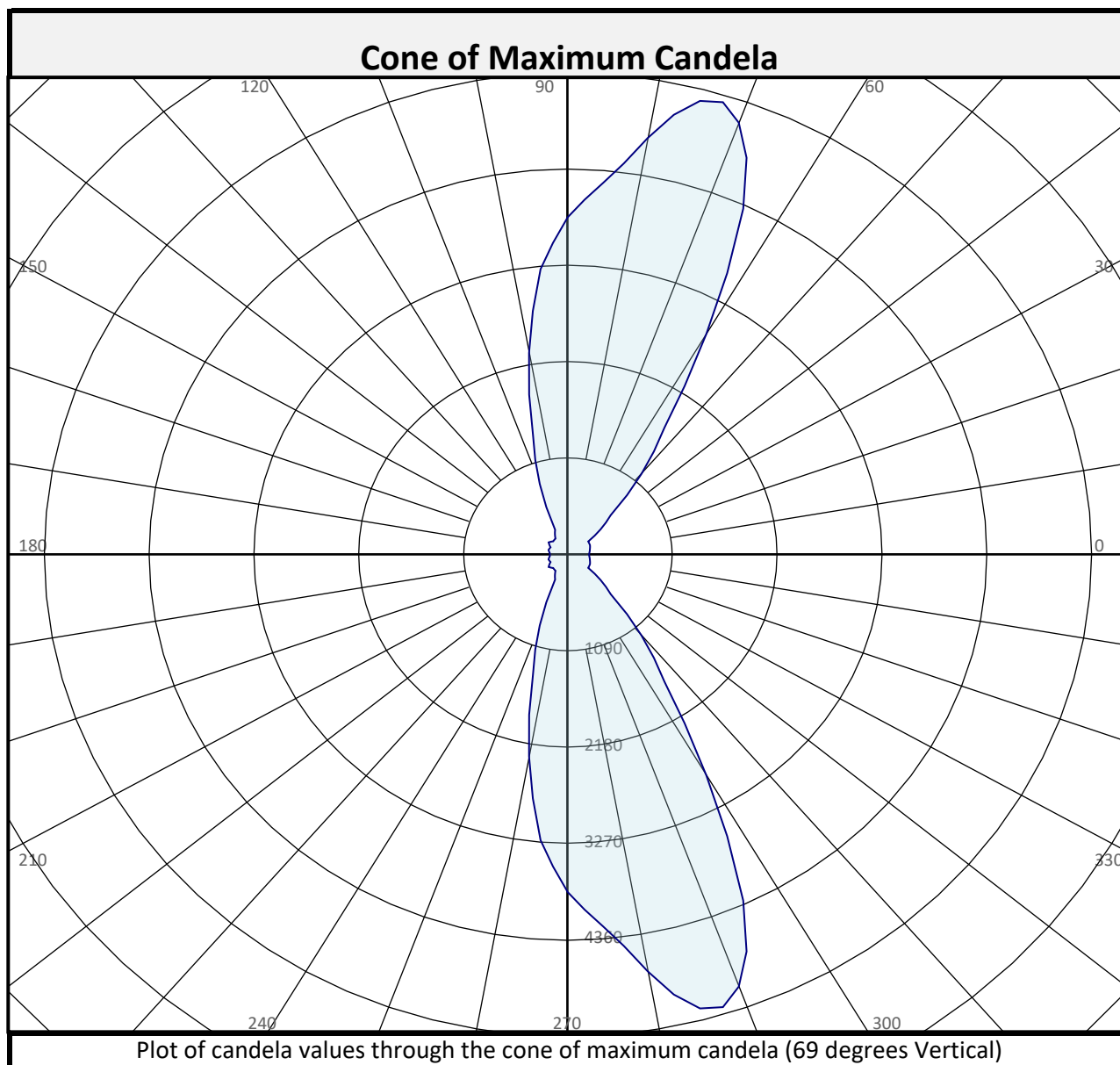


Street and House Side Flux Summary						
	Downward		Upward		Total	
	Lumens	% of Total	Lumens	% of Total	Lumens	% of Total
Street Side	5442.1	66.4%	0.0	0.0%	5442.1	66.4%
House Side	2752.4	33.6%	0.0	0.0%	2752.4	33.6%
Total	8194.5	100.0%	0.0	0.0%	8194.5	100.0%



Report of Test

LLIA001574-007A-R01



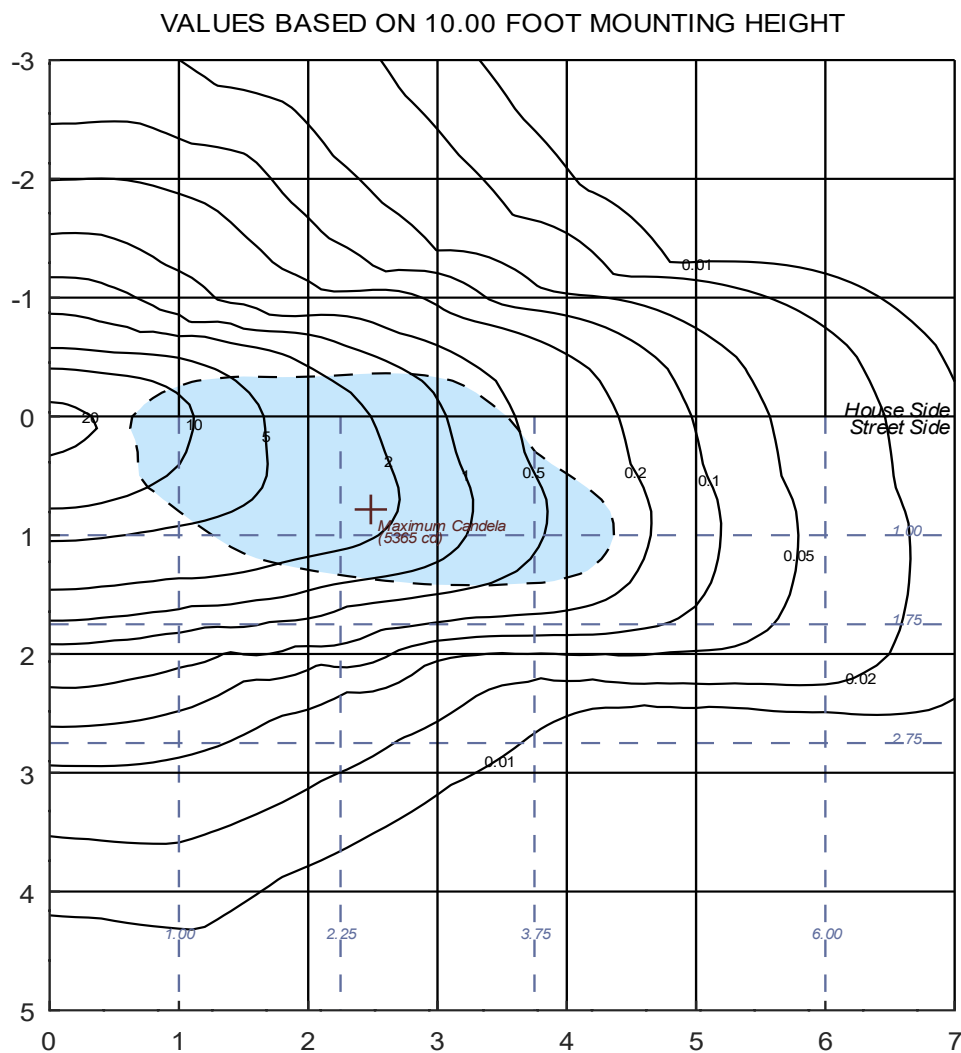
Street and House Side Flux Summary						
	Downward		Upward		Total	
	Lumens	% of Total	Lumens	% of Total	Lumens	% of Total
Street Side	5442.1	66.4%	0.0	0.0%	5442.1	66.4%
House Side	2752.4	33.6%	0.0	0.0%	2752.4	33.6%
Total	8194.5	100.0%	0.0	0.0%	8194.5	100.0%



Report of Test

LLIA001574-007A-R01

Iso-Illuminance Plot



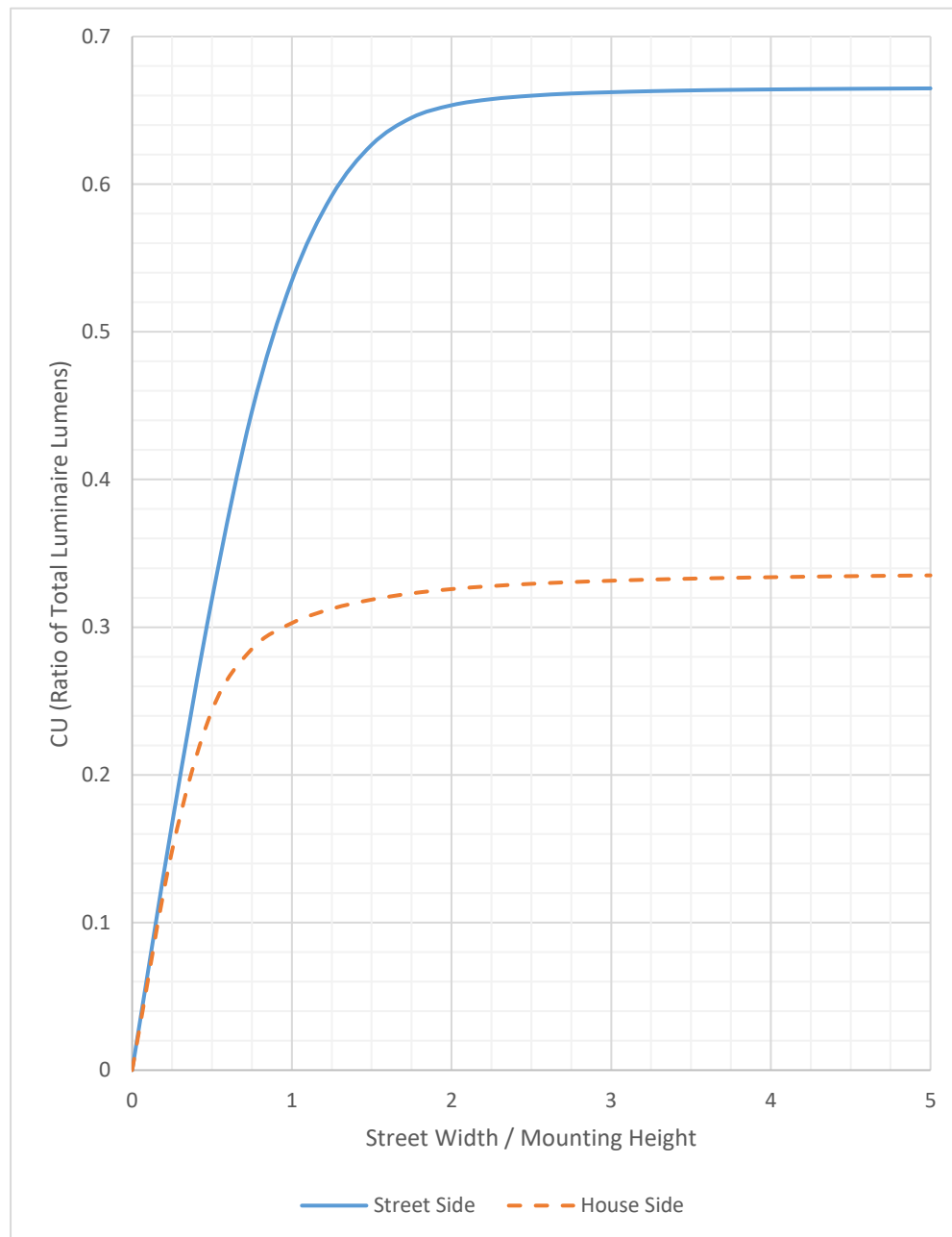
The isofootcandle values shown in the plot above are based on a mounting height of $h = 10.0$ feet. Grid values show multiples of mounting height. The isoilluminance contour lines are expressed in units of footcandles. The values expressed are based on the direct light from a single unit without the contribution of room reflections.



Report of Test

LLIA001574-007A-R01

Coefficients of Utilization Plot

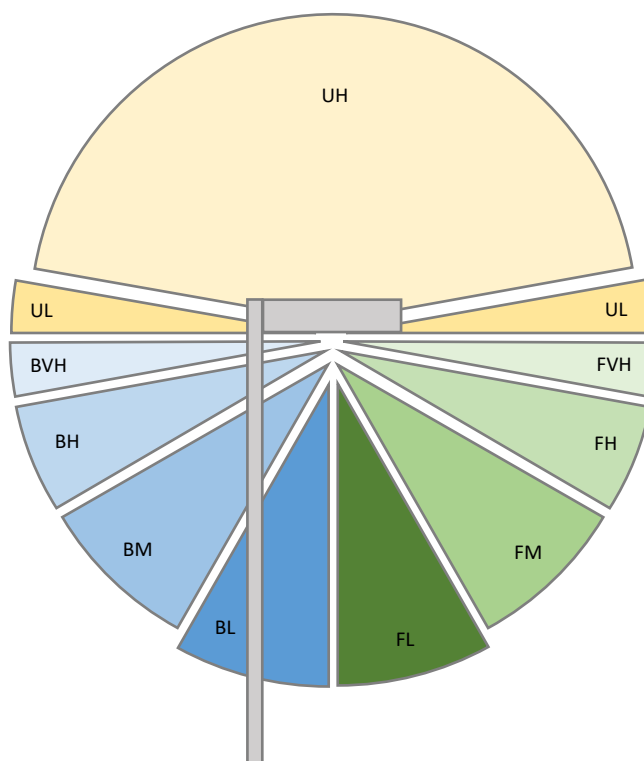




Report of Test

LLIA001574-007A-R01

LCS Tables and Bug Classification



Back Light

BL - Back Low (0°-30°)	747.0 Lm
BM - Back Mid (30°-60°)	1371.4 Lm
BH - Back High (60°-80°)	614.3 Lm
BVH - Back Very High (80°-90°)	19.7 Lm

Uplight

UL - Upward Low (90°-100°)	0.0 Lm
UH - Upward High (100°-180°)	0.0 Lm

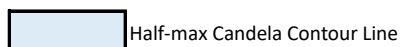
Forward Light

FL - Forward Low (0°-30°)	1013.8 Lm
FM - Forward Mid (30°-60°)	2793.9 Lm
FH - Forward High (60°-80°)	1597.0 Lm
FVH - Forward Very High (80°-90°)	37.4 Lm

BUG Ratings: B2 - U0 - G2



Iso-Candela Plot





Report of Test

LLIA001574-007A-R01

Luminous Intensity (Candela) Table

		Lateral (C-Plane) Angles														
		0	5	15	25	35	45	55	57.5	60	62.5	65	67.5	70	72.5	75
Vertical (Gamma) Angles - Data was acquired in 0.5° increments, 2.5° increments shown.	0	2303	2303	2303	2303	2303	2303	2303	2303	2303	2303	2303	2303	2303	2303	2303
	2.5	2380	2380	2378	2372	2363	2355	2345	2343	2339	2335	2334	2330	2327	2323	2321
	5	2444	2442	2443	2435	2425	2408	2384	2376	2371	2366	2359	2354	2348	2342	2334
	7.5	2436	2436	2441	2441	2441	2433	2418	2413	2406	2397	2389	2377	2369	2360	2350
	10	2382	2383	2391	2398	2411	2428	2427	2424	2423	2418	2411	2401	2390	2378	2366
	12.5	2356	2356	2361	2362	2366	2395	2416	2420	2422	2425	2419	2414	2406	2396	2385
	15	2320	2322	2327	2337	2343	2354	2390	2400	2409	2415	2420	2419	2417	2411	2400
	17.5	2303	2302	2304	2308	2321	2333	2360	2372	2387	2401	2409	2420	2420	2423	2417
	20	2341	2339	2319	2302	2300	2319	2344	2356	2370	2387	2407	2419	2428	2438	2440
	22.5	2449	2445	2418	2360	2307	2310	2343	2353	2365	2382	2405	2425	2442	2458	2466
	25	2530	2525	2500	2453	2367	2324	2355	2366	2379	2396	2417	2441	2464	2483	2500
	27.5	2576	2573	2562	2512	2447	2368	2379	2391	2406	2425	2446	2470	2495	2517	2535
	30	2507	2508	2535	2545	2503	2440	2421	2432	2446	2465	2484	2508	2531	2561	2581
	32.5	2373	2382	2428	2488	2530	2510	2477	2489	2500	2521	2539	2559	2582	2611	2631
	35	2226	2230	2290	2377	2499	2551	2548	2559	2577	2598	2617	2634	2655	2684	2706
	37.5	2047	2059	2139	2249	2419	2572	2619	2634	2656	2684	2702	2722	2747	2775	2804
	40	1826	1842	1954	2109	2309	2556	2681	2705	2734	2768	2802	2828	2858	2888	2918
	42.5	1672	1683	1777	1962	2205	2512	2738	2783	2818	2863	2911	2950	2982	3013	3043
	45	1572	1581	1655	1827	2105	2454	2789	2855	2913	2971	3027	3073	3105	3129	3149
	47.5	1469	1474	1545	1707	2006	2385	2835	2935	3020	3094	3156	3205	3233	3256	3266
	50	1358	1365	1430	1597	1894	2323	2879	3018	3128	3224	3294	3346	3381	3395	3401
	52.5	1246	1253	1314	1479	1782	2267	2920	3088	3237	3357	3448	3514	3553	3568	3561
	55	1133	1138	1196	1348	1657	2213	2953	3149	3331	3485	3603	3685	3734	3751	3738
	57.5	988	995	1047	1220	1531	2152	2967	3188	3404	3595	3749	3854	3906	3913	3888
	60	765	775	836	1027	1383	2085	2973	3218	3473	3699	3875	4005	4076	4092	4050
	62.5	496	505	557	718	1089	1915	2920	3215	3533	3838	4072	4209	4288	4327	4299
	65	353	363	370	432	676	1497	2701	3080	3496	3929	4293	4545	4670	4705	4668
	67.5	270	277	282	303	356	949	2211	2687	3228	3821	4384	4820	5094	5200	5154
	70	176	180	200	221	220	454	1410	1909	2551	3314	4130	4760	5148	5333	5304
	72.5	122	128	147	156	159	222	642	980	1491	2257	3188	4034	4558	4789	4799
	75	91	95	114	112	113	134	199	289	539	981	1751	2663	3296	3631	3736
	77.5	73	75	96	76	78	86	110	125	162	323	712	1418	2112	2468	2622
	80	48	50	71	56	47	58	60	65	76	111	210	472	951	1177	1242
	82.5	23	25	35	34	25	29	30	32	35	47	76	151	325	417	419
	85	7	8	10	10	10	12	13	13	14	18	21	28	41	45	42
	87.5	2	2	3	3	3	4	4	4	4	5	5	5	5	5	6
	90	0	0	0	0	0	0	0	0	0	0	0	0	0	0	0



Report of Test

LLIA001574-007A-R01

Luminous Intensity (Candela) Table

		Lateral (C-Plane) Angles														
		77.5	80	82.5	85	90	95	105	115	125	135	145	155	165	175	180
Vertical (Gamma) Angles - Data was acquired in 0.5° increments, 2.5° increments shown.	0	2303	2303	2303	2303	2303	2303	2303	2303	2303	2303	2303	2303	2303	2303	2303
	2.5	2318	2317	2313	2306	2304	2294	2281	2266	2251	2240	2230	2224	2221	2217	2217
	5	2327	2324	2317	2308	2298	2283	2257	2227	2203	2177	2157	2143	2135	2128	2127
	7.5	2341	2332	2321	2309	2293	2273	2230	2190	2148	2112	2077	2050	2034	2023	2021
	10	2353	2342	2329	2314	2292	2263	2208	2149	2090	2035	1983	1948	1929	1915	1913
	12.5	2368	2357	2341	2326	2296	2259	2187	2109	2030	1957	1898	1854	1824	1805	1803
	15	2389	2376	2359	2339	2306	2262	2176	2075	1968	1887	1811	1751	1710	1684	1682
	17.5	2408	2397	2383	2361	2321	2275	2171	2040	1919	1808	1714	1632	1575	1545	1542
	20	2433	2424	2412	2394	2350	2299	2172	2017	1870	1731	1604	1500	1429	1389	1387
	22.5	2465	2462	2455	2438	2391	2336	2187	2002	1823	1644	1482	1356	1266	1218	1212
	25	2507	2511	2509	2494	2451	2388	2214	1996	1774	1549	1352	1194	1088	1038	1032
	27.5	2555	2564	2565	2554	2518	2448	2256	1997	1719	1445	1204	1029	930	886	883
	30	2604	2619	2624	2621	2590	2522	2305	2000	1662	1328	1049	885	797	756	751
	32.5	2658	2680	2690	2697	2674	2604	2357	2010	1598	1196	911	762	689	657	654
	35	2736	2764	2781	2793	2778	2705	2423	2016	1528	1063	789	666	612	586	582
	37.5	2835	2864	2886	2903	2897	2820	2487	2013	1444	938	687	583	531	507	503
	40	2948	2980	3003	3018	3019	2937	2559	2000	1339	811	590	503	476	465	464
	42.5	3068	3098	3121	3137	3140	3056	2619	1973	1216	686	502	461	451	444	443
	45	3169	3194	3221	3237	3239	3153	2660	1925	1054	560	449	435	424	413	413
	47.5	3276	3294	3319	3339	3334	3233	2681	1831	872	466	416	406	397	384	383
	50	3400	3400	3418	3431	3425	3300	2669	1689	688	421	386	377	374	363	359
	52.5	3546	3530	3529	3530	3509	3356	2630	1488	526	394	362	354	368	346	337
	55	3703	3660	3630	3619	3578	3394	2564	1228	421	372	337	338	353	332	321
	57.5	3832	3761	3708	3673	3606	3376	2434	953	363	348	314	324	329	308	299
	60	3974	3878	3793	3735	3618	3325	2264	705	326	322	296	306	302	276	267
	62.5	4206	4076	3956	3871	3675	3296	2056	522	296	293	289	283	265	237	229
	65	4544	4362	4173	4026	3732	3272	1830	410	272	263	273	249	233	204	200
	67.5	4972	4711	4438	4225	3838	3277	1571	345	243	233	256	214	214	191	188
	70	5079	4732	4382	4125	3733	3167	1261	287	209	200	230	187	203	192	191
	72.5	4630	4267	3847	3552	3209	2725	832	224	175	168	194	165	192	207	214
	75	3668	3443	3063	2744	2472	2058	435	155	134	133	159	147	205	239	237
	77.5	2642	2541	2277	1963	1729	1402	204	102	90	98	126	139	178	185	181
	80	1237	1194	1109	960	860	691	80	60	54	65	83	94	111	113	112
	82.5	398	370	340	299	285	220	35	33	29	35	44	48	52	21	9
	85	37	33	31	29	25	25	16	14	13	14	14	14	7	2	2
	87.5	6	6	6	6	5	5	5	5	4	3	2	1	1	0	0
	90	0	0	0	0	0	0	0	0	0	0	0	0	0	0	0



Report of Test

LLIA001574-007A-R01

Luminous Intensity (Candela) Table

		Lateral (C-Plane) Angles														
		0	5	15	25	35	45	55	57.5	60	62.5	65	67.5	70	72.5	75
Vertical (Gamma) Angles - Data was acquired in 0.5° increments, 2.5° increments shown.	90	0	0	0	0	0	0	0	0	0	0	0	0	0	0	0
	92.5	0	0	0	0	0	0	0	0	0	0	0	0	0	0	0
	95	0	0	0	0	0	0	0	0	0	0	0	0	0	0	0
	97.5	0	0	0	0	0	0	0	0	0	0	0	0	0	0	0
	100	0	0	0	0	0	0	0	0	0	0	0	0	0	0	0
	102.5	0	0	0	0	0	0	0	0	0	0	0	0	0	0	0
	105	0	0	0	0	0	0	0	0	0	0	0	0	0	0	0
	107.5	0	0	0	0	0	0	0	0	0	0	0	0	0	0	0
	110	0	0	0	0	0	0	0	0	0	0	0	0	0	0	0
	112.5	0	0	0	0	0	0	0	0	0	0	0	0	0	0	0
	115	0	0	0	0	0	0	0	0	0	0	0	0	0	0	0
	117.5	0	0	0	0	0	0	0	0	0	0	0	0	0	0	0
	120	0	0	0	0	0	0	0	0	0	0	0	0	0	0	0
	122.5	0	0	0	0	0	0	0	0	0	0	0	0	0	0	0
	125	0	0	0	0	0	0	0	0	0	0	0	0	0	0	0
	127.5	0	0	0	0	0	0	0	0	0	0	0	0	0	0	0
	130	0	0	0	0	0	0	0	0	0	0	0	0	0	0	0
	132.5	0	0	0	0	0	0	0	0	0	0	0	0	0	0	0
	135	0	0	0	0	0	0	0	0	0	0	0	0	0	0	0
	137.5	0	0	0	0	0	0	0	0	0	0	0	0	0	0	0
	140	0	0	0	0	0	0	0	0	0	0	0	0	0	0	0
	142.5	0	0	0	0	0	0	0	0	0	0	0	0	0	0	0
	145	0	0	0	0	0	0	0	0	0	0	0	0	0	0	0
	147.5	0	0	0	0	0	0	0	0	0	0	0	0	0	0	0
	150	0	0	0	0	0	0	0	0	0	0	0	0	0	0	0
	152.5	0	0	0	0	0	0	0	0	0	0	0	0	0	0	0
	155	0	0	0	0	0	0	0	0	0	0	0	0	0	0	0
	157.5	0	0	0	0	0	0	0	0	0	0	0	0	0	0	0
	160	0	0	0	0	0	0	0	0	0	0	0	0	0	0	0
	162.5	0	0	0	0	0	0	0	0	0	0	0	0	0	0	0
	165	0	0	0	0	0	0	0	0	0	0	0	0	0	0	0
	167.5	0	0	0	0	0	0	0	0	0	0	0	0	0	0	0
	170	0	0	0	0	0	0	0	0	0	0	0	0	0	0	0
	172.5	0	0	0	0	0	0	0	0	0	0	0	0	0	0	0
	175	0	0	0	0	0	0	0	0	0	0	0	0	0	0	0
	177.5	0	0	0	0	0	0	0	0	0	0	0	0	0	0	0
	180	0	0	0	0	0	0	0	0	0	0	0	0	0	0	0



Report of Test

LLIA001574-007A-R01

Luminous Intensity (Candela) Table

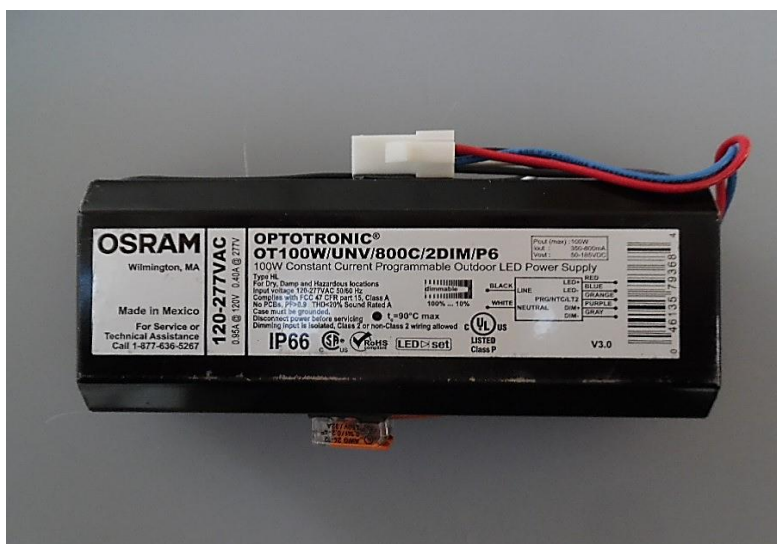
		Lateral (C-Plane) Angles														
		77.5	80	82.5	85	90	95	105	115	125	135	145	155	165	175	180
Vertical (Gamma) Angles - Data was acquired in 0.5° increments, 2.5° increments shown.	90	0	0	0	0	0	0	0	0	0	0	0	0	0	0	0
	92.5	0	0	0	0	0	0	0	0	0	0	0	0	0	0	0
	95	0	0	0	0	0	0	0	0	0	0	0	0	0	0	0
	97.5	0	0	0	0	0	0	0	0	0	0	0	0	0	0	0
	100	0	0	0	0	0	0	0	0	0	0	0	0	0	0	0
	102.5	0	0	0	0	0	0	0	0	0	0	0	0	0	0	0
	105	0	0	0	0	0	0	0	0	0	0	0	0	0	0	0
	107.5	0	0	0	0	0	0	0	0	0	0	0	0	0	0	0
	110	0	0	0	0	0	0	0	0	0	0	0	0	0	0	0
	112.5	0	0	0	0	0	0	0	0	0	0	0	0	0	0	0
	115	0	0	0	0	0	0	0	0	0	0	0	0	0	0	0
	117.5	0	0	0	0	0	0	0	0	0	0	0	0	0	0	0
	120	0	0	0	0	0	0	0	0	0	0	0	0	0	0	0
	122.5	0	0	0	0	0	0	0	0	0	0	0	0	0	0	0
	125	0	0	0	0	0	0	0	0	0	0	0	0	0	0	0
	127.5	0	0	0	0	0	0	0	0	0	0	0	0	0	0	0
	130	0	0	0	0	0	0	0	0	0	0	0	0	0	0	0
	132.5	0	0	0	0	0	0	0	0	0	0	0	0	0	0	0
	135	0	0	0	0	0	0	0	0	0	0	0	0	0	0	0
	137.5	0	0	0	0	0	0	0	0	0	0	0	0	0	0	0
	140	0	0	0	0	0	0	0	0	0	0	0	0	0	0	0
	142.5	0	0	0	0	0	0	0	0	0	0	0	0	0	0	0
	145	0	0	0	0	0	0	0	0	0	0	0	0	0	0	0
	147.5	0	0	0	0	0	0	0	0	0	0	0	0	0	0	0
	150	0	0	0	0	0	0	0	0	0	0	0	0	0	0	0
	152.5	0	0	0	0	0	0	0	0	0	0	0	0	0	0	0
	155	0	0	0	0	0	0	0	0	0	0	0	0	0	0	0
	157.5	0	0	0	0	0	0	0	0	0	0	0	0	0	0	0
	160	0	0	0	0	0	0	0	0	0	0	0	0	0	0	0
	162.5	0	0	0	0	0	0	0	0	0	0	0	0	0	0	0
	165	0	0	0	0	0	0	0	0	0	0	0	0	0	0	0
	167.5	0	0	0	0	0	0	0	0	0	0	0	0	0	0	0
	170	0	0	0	0	0	0	0	0	0	0	0	0	0	0	0
	172.5	0	0	0	0	0	0	0	0	0	0	0	0	0	0	0
	175	0	0	0	0	0	0	0	0	0	0	0	0	0	0	0
	177.5	0	0	0	0	0	0	0	0	0	0	0	0	0	0	0
	180	0	0	0	0	0	0	0	0	0	0	0	0	0	0	0



Report of Test

LLIA001574-007A-R01

Additional Pictures of Test Subject



Report of Test

LLIA001574-007A-R01

Test Distance 9.5 m
Ambient Temperature 25.0 °C

Notes

The laboratory has not participated in the selection of samples to be tested. All testing is performed on the understanding that the significance of the report is limited to the extent that the test sample is representative of production units.

Tested in accordance with the applicable sections of publications: IES LM-79-19. Format of reports and angular increments based on IES LM-31-95 and LM-10-96.

The device under test emits no detectable uplight, as defined by ANSI/IES LM-31-20. For the purpose of this report, certain non-zero uplight readings, attributable to instrument artifacts, have been assigned a zero value.

The luminous intensity values, and other derived quantities, contained in this report are based on absolute data.

Prorating the performance of the sample for the use of other component combinations (such as lamp / LED / Ballast / driver), or for use in different environmental conditions than that tested, may produce erroneous results.

This report is free of erasures and corrections.

Photometric intensity values are reported using the IES C-Type spherical coordinate system as defined in IES LM-75-01.

This report may contain data that are not covered by the NVLAP accreditation. Quantities marked with ‡ are not covered.

This report must not be used by the customer to claim product certification, approval or endorsement by NVLAP, NIST, or any agency of the Federal Government.

Revision

R01 - 11/11/2021 - Revised Catalog Number



Report of Test

LLIA001574-007B-R01*

Integrating Sphere Report

Catalog Number: NXT-36S-5-X-2ES-6-XX-4-XX-X-XX-X

Pole/arm mounted, grey painted cast aluminum housing and door/driver compartment cover, one circuit board, one clear plastic lens with optic below each LED and clear flat glass enclosure.

36 white LEDs

Osram Optotronic OT100W/UNV/800C/2DIM/P6 LED driver labeled as 600mA, WH91-5U1-03 surge suppressor



Performance Summary

Voltage	120.0 Vac
Current	0.5835 A
Power	69.46 W
Frequency	59.99 Hz
Power Factor	0.992
Current THD	1.7 %
Total Luminous Flux	8173.9 lm
Efficacy	117.7 lm/W
Chromaticity (x,y)	(0.4319, 0.4068)
(u',v')	(0.2462, 0.5217)
Duv	0.0018
CCT	3109 K
CRI (Ra)	73
R9	-27
TM-30: Rf	72
TM-30: Rg	96
TM-30: Rcs,h1	-15

Prepared For:

LED Roadway Lighting

84 Chain Lake Drive

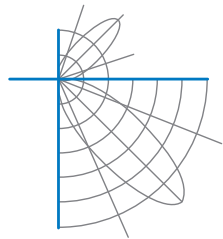
Suite 403

Halifax, Nova Scotia B3S 1A2, Canada

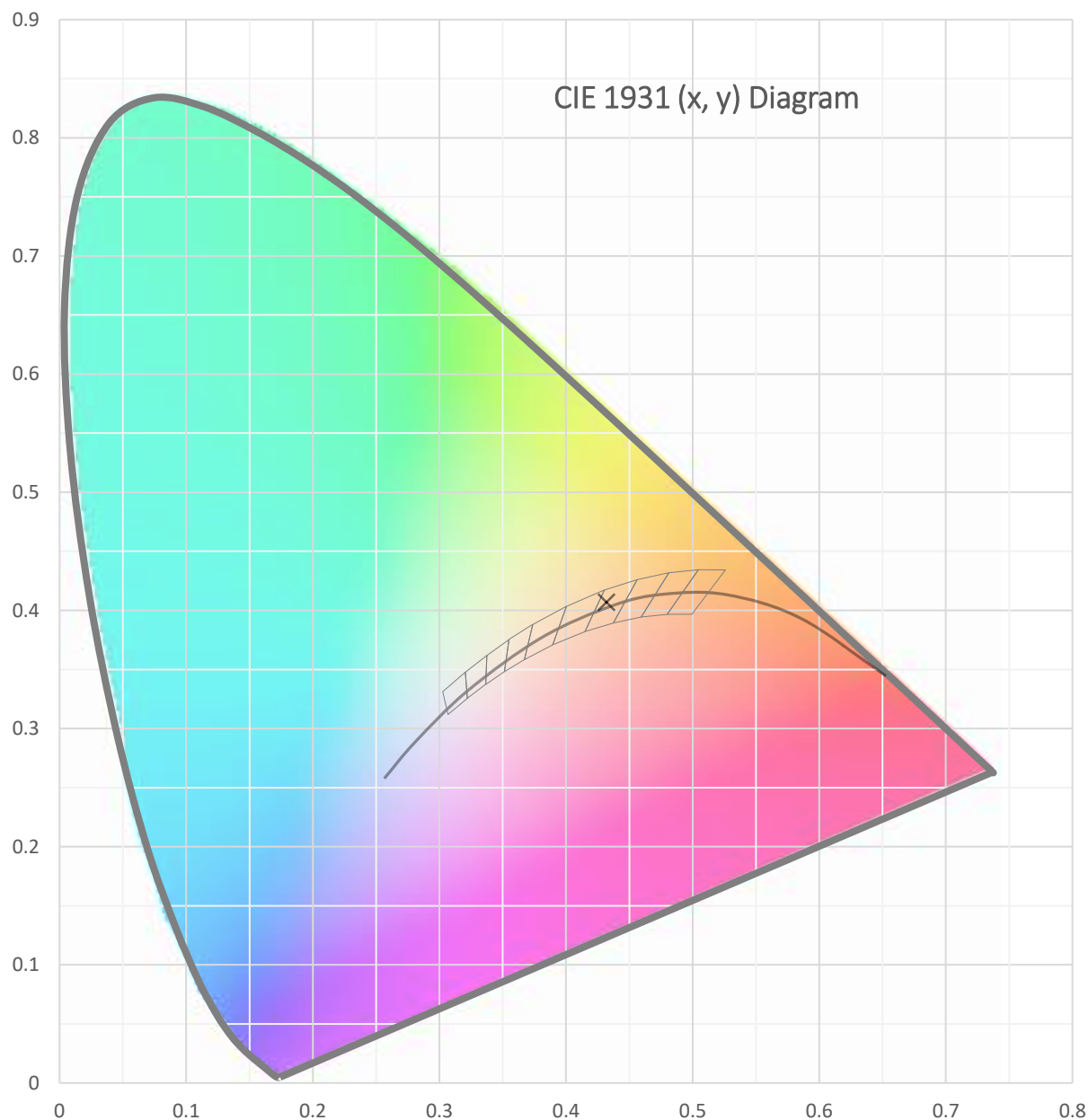
*This test report supersedes test report LLIA001574-007B

Test date: 11/04/2021

Report date: 11/11/2021

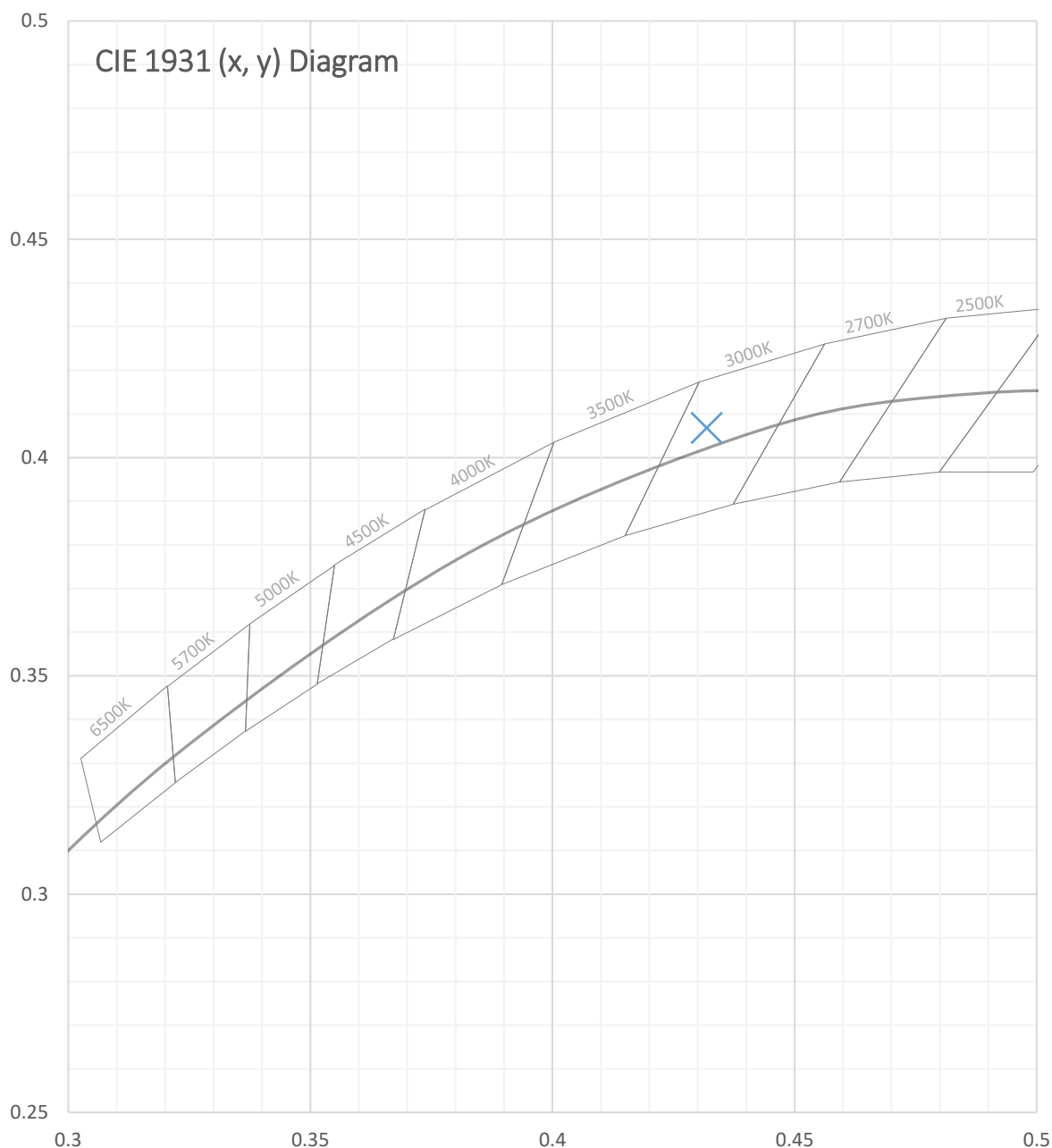


Test Report Number: LLIA001574-007B-R01





Test Report Number: LLIA001574-007B-R01





Test Report Number: LLIA001574-007B-R01

Total Radiant Flux	23.48 W
Total Luminous Flux	8173.9 Lm
Chromaticity CIE 1931 (x, y)	(0.4319, 0.4068)
Chromaticity CIE 1976 (u', v')	(0.2462, 0.5217)
Correlated Color Temperature (CCT)	3109 K
Color Rendering Index (Ra)	73
R1	70
R2	81
R3	91
R4	72
R5	69
R6	74
R7	80
R8	48
R9	-27
R10	55
R11	68
R12	49
R13	71
R14	95
TM-30: Rf	72
TM-30: Rg	96
TM-30: Rcs,h1	-15
Distance from Planckian Locus (Duv)	0.0018
Scotopic/Photopic Ratio $\frac{V_{\lambda}}{V_{\lambda}^{\text{scot}}}$	1.228

Electrical Data

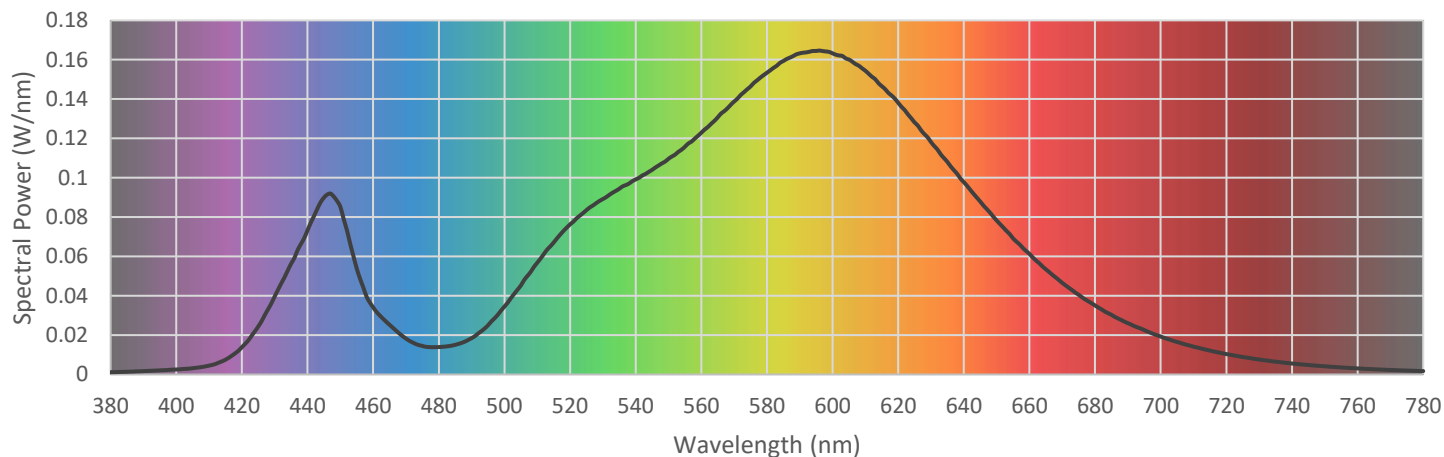
Voltage	120.0 Vac
Current	0.5835 A
Power	69.46 W
Frequency	59.99 Hz
Power Factor	0.992
Current THD	1.7 %



Test Report Number: LLIA001574-007B-R01

Summary Spectral Power Distribution (wavelength - nm, spectral power - W/nm)

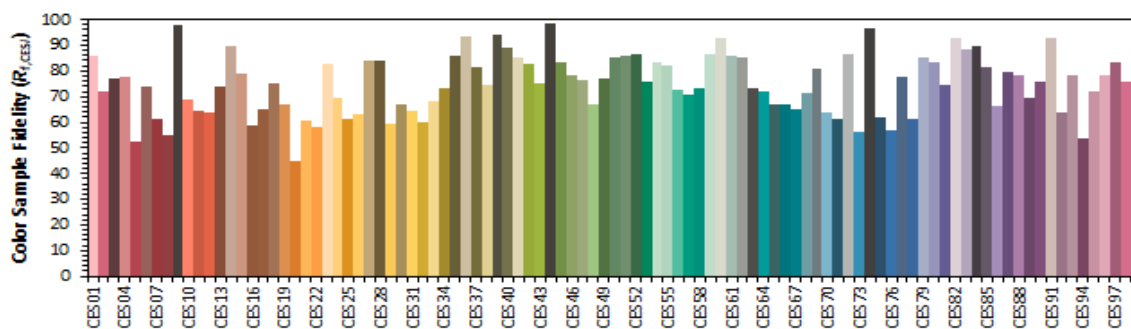
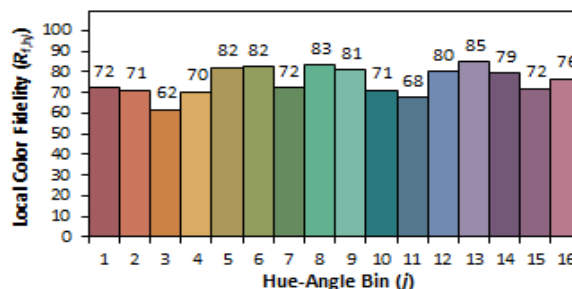
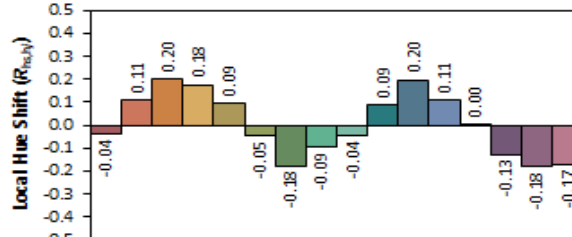
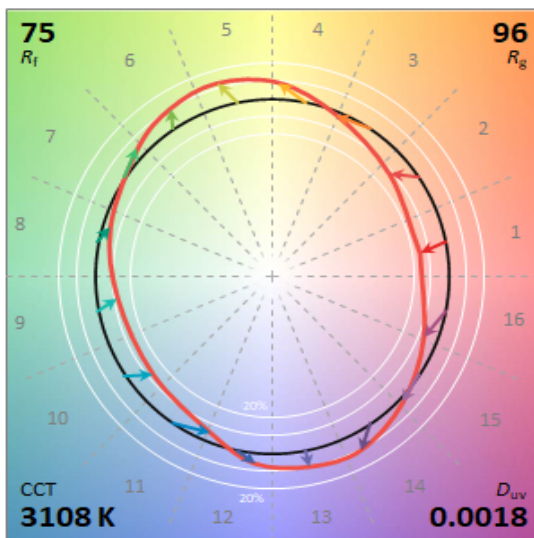
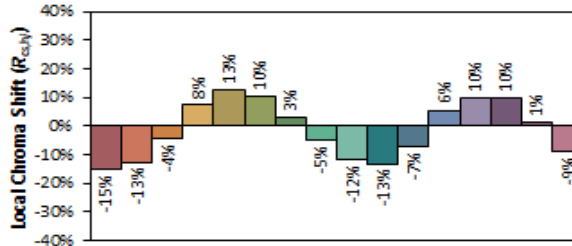
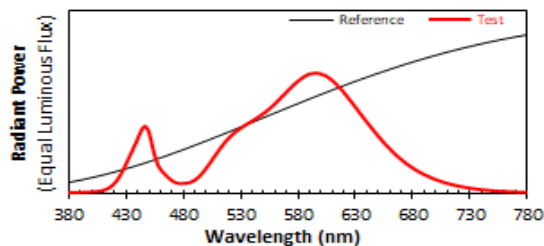
380	0.001171	480	0.013925	580	0.153386	680	0.035065
385	0.001371	485	0.015075	585	0.159346	685	0.030308
390	0.001702	490	0.018469	590	0.163229	690	0.026067
395	0.002097	495	0.025012	595	0.164434	695	0.022554
400	0.002533	500	0.034520	600	0.163226	700	0.019260
405	0.003179	505	0.045223	605	0.160107	705	0.016523
410	0.004511	510	0.056788	610	0.154386	710	0.014146
415	0.007532	515	0.067065	615	0.146540	715	0.012142
420	0.013890	520	0.076318	620	0.138086	720	0.010362
425	0.024438	525	0.083540	625	0.128108	725	0.008872
430	0.039727	530	0.089179	630	0.118113	730	0.007617
435	0.056348	535	0.094391	635	0.108017	735	0.006500
440	0.073361	540	0.099150	640	0.097755	740	0.005571
445	0.089921	545	0.104013	645	0.087901	745	0.004799
450	0.085235	550	0.109634	650	0.078295	750	0.004154
455	0.053805	555	0.115744	655	0.069180	755	0.003567
460	0.034089	560	0.122885	660	0.061304	760	0.003087
465	0.025233	565	0.130684	665	0.053465	765	0.002643
470	0.018261	570	0.138745	670	0.046539	770	0.002286
475	0.014489	575	0.146380	675	0.040508	775	0.001982
						780	0.001722





Test Report Number: LLIA001574-007B-R01

IES TM-30 Details



Notes:

x 0.4319
 y 0.4067
 u' 0.2462
 v' 0.5217

CIE 13.3-1995
(CRI)

R_a 73
 R_g -27

Test Report Number: LLIA001574-007B-R01

Test Equipment Configuration: LightLab International Allentown 2m Integrating Sphere
Measurements acquired using a Labsphere CDS 2600 spectroradiometer
Testing was performed using 4π geometry

Test Temperature: 25.1 °C

Test Procedure: Tested in accordance with the applicable sections of:
LM-79-19, LM-78-07, LM-58-13, ANSI/ANSI C78.377-2017, TM-30-18

Significance: The laboratory has not participated in the selection of samples to be tested.
All testing is performed on the understanding that the significance of the report is limited to the extent that the test sample is representative of production units.

Notes: The measurements and other derived quantities contained in this report are based on the absolute data as measured.

Prorating the performance of the sample for the use of other component combinations (such as lamp / LED / Ballast / driver), or for use in different environmental conditions than that tested, may produce erroneous results.

This report is free of erasures and corrections

This report may contain data that are not covered by the NVLAP accreditation. Quantities marked with ‡ are not covered.

This report must not be used by the customer to claim product certification, approval or endorsement by NVLAP, NIST, or any agency of the Federal Government.

Revision: R01 - 11/11/2021 - Revised Catalog Number

Sphere Report Template V2-15



Report of Test

LLIA001574-007C-R01*

Electrical Test Report

Catalog Number: NXT-36S-5-X-2ES-6-XX-4-XX-X-XX-X

Pole/arm mounted, grey painted cast aluminum housing and door/driver compartment cover, one circuit board, one clear plastic lens with optic below each LED and clear flat glass enclosure.

36 white LEDs

Osram Optotronic OT100W/UNV/800C/2DIM/P6 LED driver labeled as 600mA, WH91-5U1-03 surge suppressor



Performance Summary

Voltage	277.0 Vac
Current	0.2651 A
Power	68.74 W
Frequency	59.99 Hz
Power Factor	0.936
Current THD	4.1 %

Ambient Temperature: 25.1 °C

Prepared For:
LED Roadway Lighting
84 Chain Lake Drive
Suite 403

Halifax, Nova Scotia B3S 1A2, Canada

*This test report supersedes test report LLIA001574-007C

R01 - 11/11/2021 - Revised Catalog Number

Tested in accordance with the applicable sections of IES LM-79-19. The laboratory has not participated in the selection of samples to be tested. All testing is performed on the understanding that the significance of the report is limited to the extent that the test sample is representative of production units. Prorating the performance of the sample for the use of other component combinations (such as lamp / LED / Ballast / driver), or for use in different environmental conditions than that tested, may produce erroneous results. This report is free of erasures and corrections. This report must not be used by the client to claim product certification, approval, or endorsement by NVLAP, NIST, or any agency of the U.S. Government.

Test date: 11/04/2021
Report date: 11/11/2021

Electrical Report Template V1-3